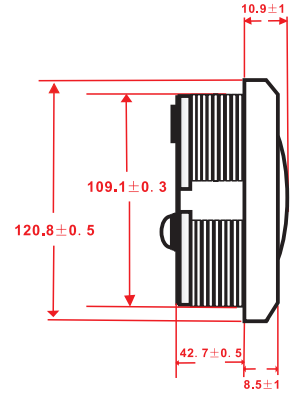


如图B,在仪表安装板上开一个直径为110mm的孔,并确保仪表板后面至少要有55mm的空间.

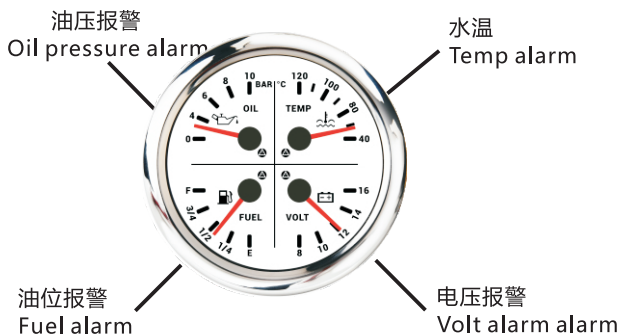
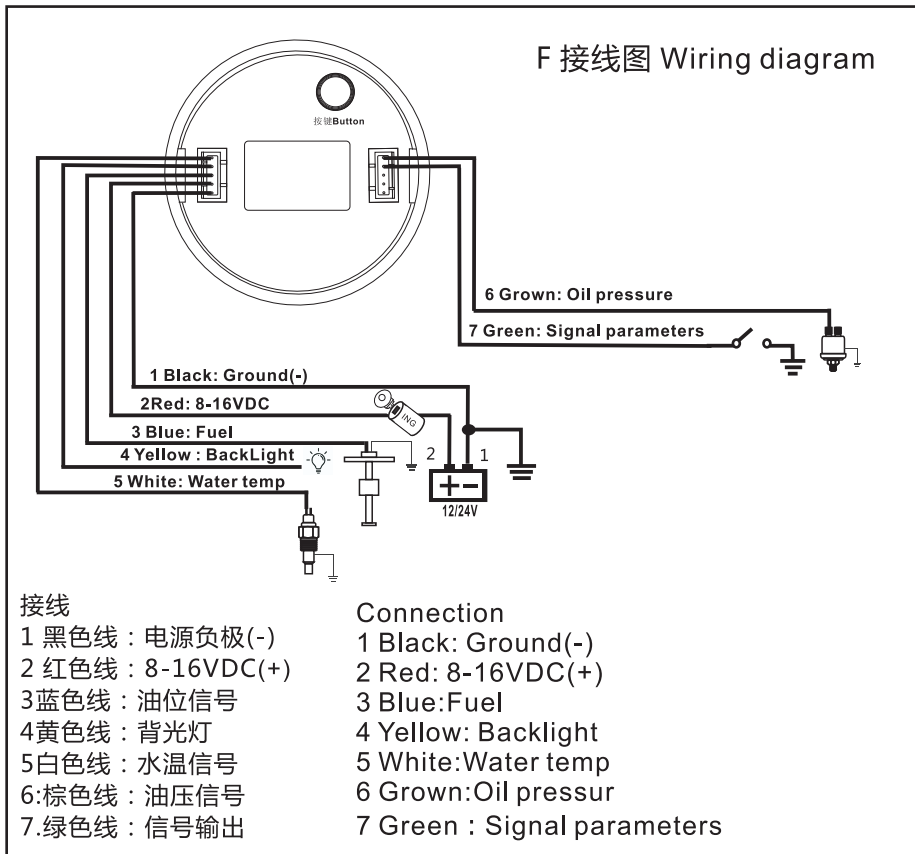
Picture B: Before installation, firstly, to open a hole  $\Phi 110\text{mm}$ (4-3/8") of the panel, make sure there is a space with(55mm backyard of panel) as well.

如图D, 将仪表装入开好的孔中,调整好位置后将后盖圈拧紧.

Picture D: Put the gauge in the hole and screw down.



如图E: 关于外形尺寸的标注说明  
Picture E: Size and annotations



- 1、输入信号为0 ~ 190ohm, 当第7根线接地时, 输入信号为240 ~ 33ohm;
- 2、输入信号为240 ~ 33ohm, 当第7根线接地时, 输入信号为0 ~ 190ohm.

- 1、 Default input signal is 0~190ohm, when 7-Green connect to Ground, input signal change to 240~33ohm;
- 2、 Default input signal is 240~33ohm, when 7-Green connect to Ground, input signal change to 0~190ohm.

特征:

- 发动机油压: 0-10bar
- 发动机温度: 40 ~ 120 °C
- 电池电压: 8-16V
- 油量: 0 ~ 100%

报警信息

- 1.燃料 < 13% 报警
- 2.油压 < 0.8 bar 报警
- 3.水温 > 95 °C 报警
- 4.电压 < 11.5 V 报警

输入参数

- 油压传感器: 10 ~ 184ohm
- 温度传感器: 301 ~ 22ohm
- 油位传感器: 0 ~ 190ohm/240 ~ 30ohm

环境工作

- 电压: 8至16伏(直流)
- 功率: 120mA
- 工作温度: -20 ~ 70度
- 储存温度: -30 ~ 80度保护 Ip67

Features

- Engine oil pressure 0~10 bar
- Engine temperature 40~120 °C
- Battery voltage 8-16V
- Fuel level 0~ 100%

Alarm message

- 1.Fuel < 13% alarm
- 2.Oil pressure < 0.8bar alarm
- 3.Water temp.> 95°C alarm
- 4.Voltage < 11.5V alarm

Input parameter

- Oil pressure sensor 10~184ohm
- Temperature sensor 301 ~22ohm
- Fuel level sensor 0~ 190ohm/240~30ohm

Environmental

- Operating Voltage 8 to 16 Volts(DC)
- Power Consumption <120mA
- Operating Temperature -20~ 70degrees
- Storage Temperature -30~80degrees
- Degree of Protection Ip67

技术参数:

- 工作电压:8~16VDC
- 工作电流:≤100mA
- 工作温度:-30~+80°C
- 储存温度:-40~+85°C
- Technical parameters:
- Operatingvoltage: 8~16VDC
- Operating current: ≤100mA
- Operating temperature: -30~ 80°C
- Storage temperature: -40~ 85°C