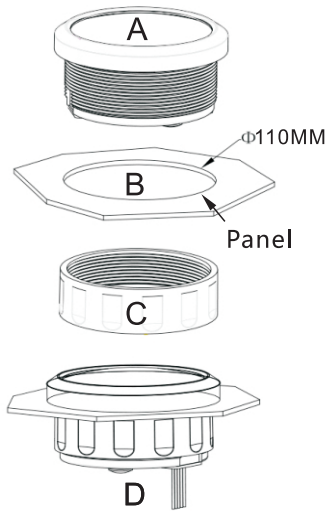


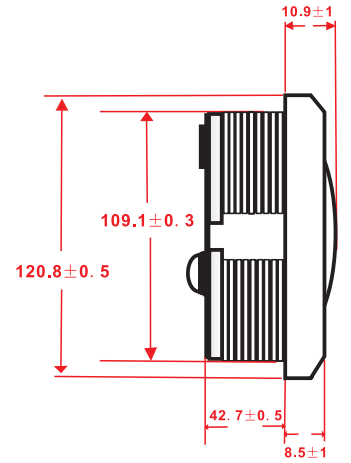
Owner's Manual

D4004E

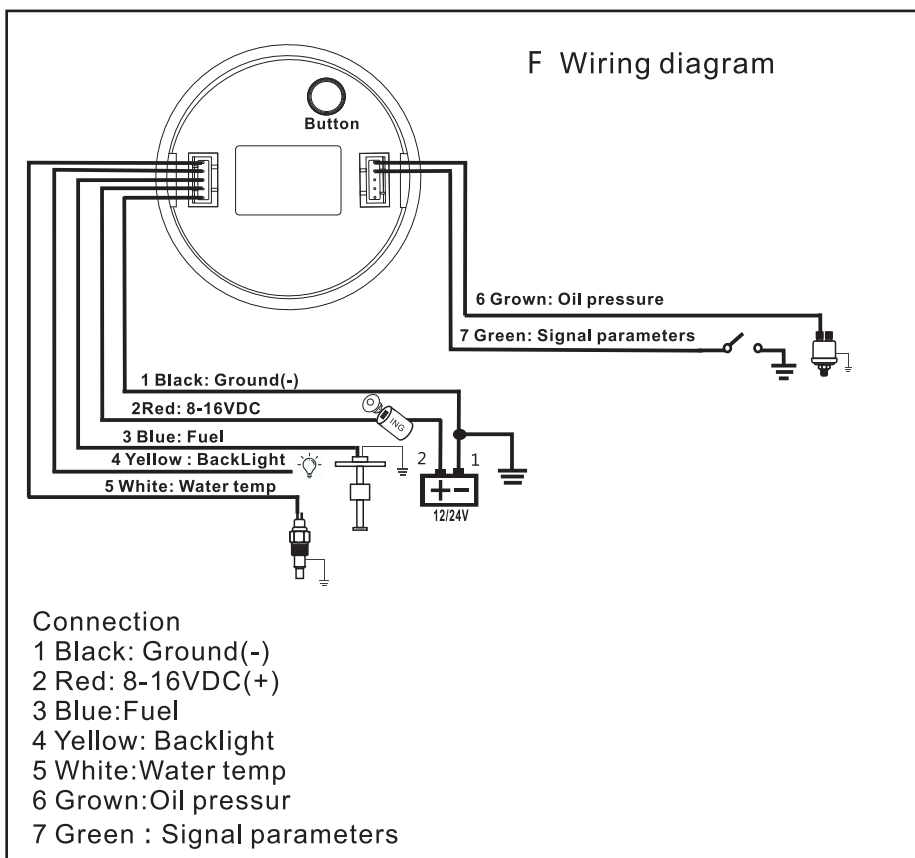


Picture B: Before installation, firstly, to open a hole $\Phi 110\text{mm}$ (4-3/8") of the panel, make sure there is a space with(55mm backyard of panel) as well.

Picture D: Put the gauge in the hole and screw down.



Picture E:Size and annotations



Connection
 1 Black: Ground(-)
 2 Red: 8-16VDC(+)
 3 Blue: Fuel
 4 Yellow: Backlight
 5 White: Water temp
 6 Brown: Oil pressure
 7 Green : Signal parameters

Features

Engine oil pressure 0-150psi
 Engine temperature 100-250 °F
 Battery voltage 8-16V
 Fuel level 0~ 100%

Alarm message

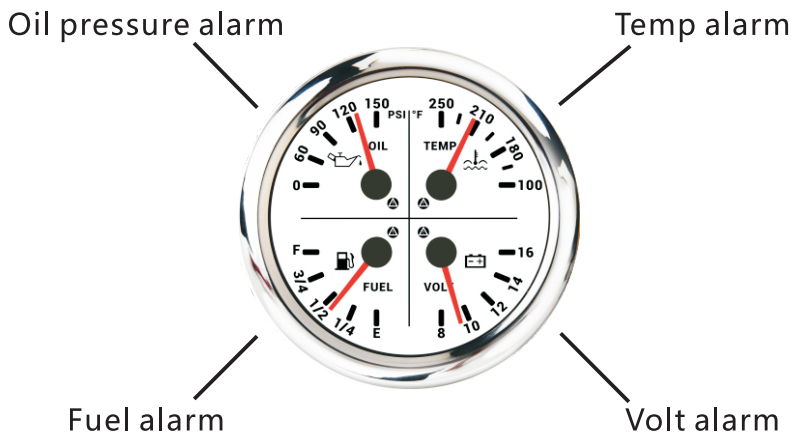
1. Fuel < 13% alarm
2. Oil pressure < 0.8bar alarm
3. Water temp. > 95°C alarm
4. Voltage < 11.5V alarm

Input parameter

Oil pressure sensor 10~184ohm
 Temperature sensor 301 ~22ohm
 Fuel level sensor 0~ 190ohm/240~30ohm

Environmental

Operating Voltage 8 to 16 Volts(DC)
 Power Consumption <120mA
 Operating Temperature -20~ 70degrees
 Storage Temperature -30~80degrees
 Degree of Protection Ip67



Technical parameters:

Operating voltage: 8~16VDC
 Operating current: $\leq 100\text{mA}$
 Operating temperature: -30~ 80°C
 Storage temperature: -40~ 85°C

1. Default input signal is 0~190ohm, when 7-Greenconnect to Ground, input signal change to 240~33ohm;
2. Default input signal is 240~33ohm, when 7-Greenconnect to Ground, input signal change to 0~190ohm.