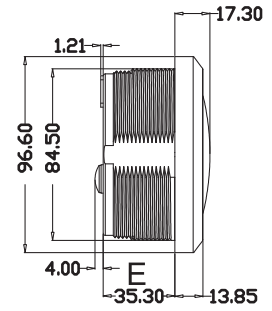


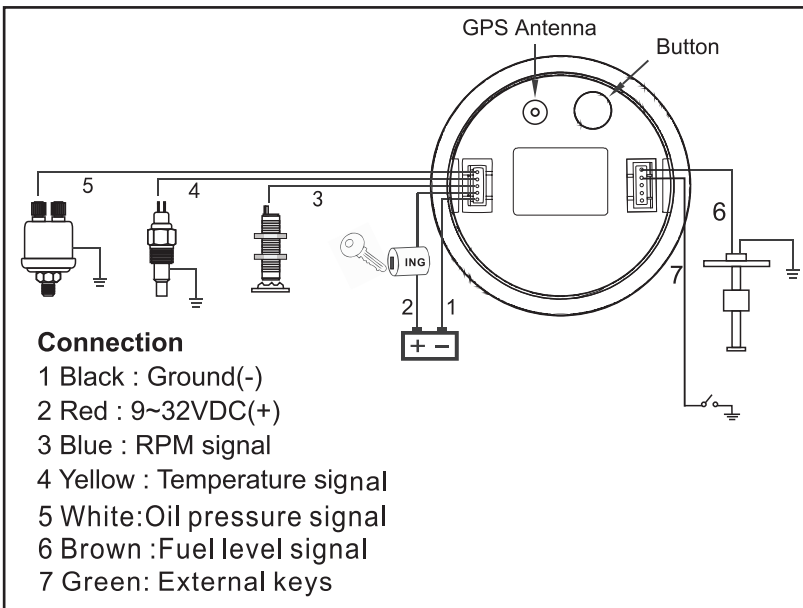
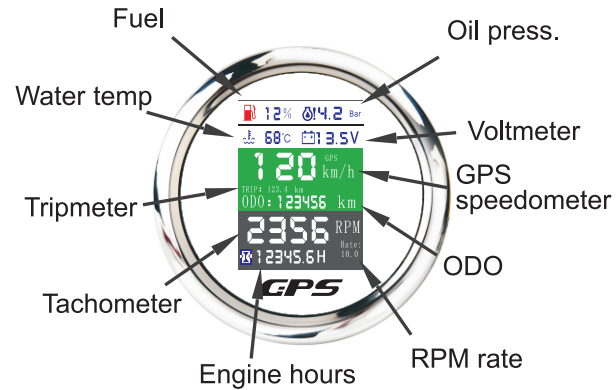
Picture B: Before installation, firstly, to open a hole $\Phi 85-87\text{mm}$ (3-2/5") of the panel, make sure there is a space with (55mm backyard of panel) as well.

Picture D: Put the gauge in the hole and screw down.



Picture E: Size and annotations

GPS installation instructions



Diesel Engine	
Gear Number	Speed Ratio
Speed Ratio = Gear Number	

Inboard Gas Engine		
Cylinder	Cycle	Speed Ratio
4	4	2
6	4	3
8	4	4
10	4	5
12	4	6

Outboard	
Poles	Speed Ratio
4	2
6	3
8	4
10	5
12	6

1. After power on, touch the button, we can switch the unit: kn/h, mph, knots, and save automatically.
2. Keep on pressing the rubber button of the backside for 3 seconds, and then enter into setting mode, if leave button more than 3 seconds, it will be out of setting mode. The value will increase when you press the button. When you leave the button and then press it again, the value will decrease. The minimum step value is 0.1 and the adjustable range is 1~360. When you get the required speed ratio value after adjustment, please leave the button. The tachometers will auto save your setup after 3 seconds. If the setup doesn't meet your demand, please re-setup.
3. Press the button first, then power on, and then enter the parameter selection mode, press the button once to select the 0-190ohm(European)level sensor or 240-33ohm(American)level sensor, press the button twice to select the temperature unit and pressure unit, (°F and Psi) or (°C and Bar) and the meter save automatically.
4. Quick touch the button for 5 times, and then enter the engine hours setting mode, when you press the button the engine hours will increase, when you leave the button and then press it again, the engine hours will decrease, when you get the required value after adjustment, please leave the button, and the meter will auto save your setup after 3 seconds.
5. Then quick touch the button for 5 times again, and then enter into the ODO setting mode, when you press the button the ODO will increase, when you leave the button and then press it again, the ODO will decrease, when you get the required value after adjustment, please leave the button, and the meter will auto save your setup after 3 seconds.