

KMB-70 Instruction Manual



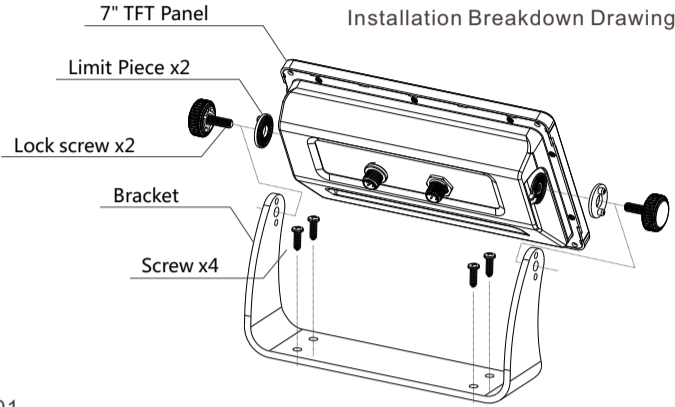
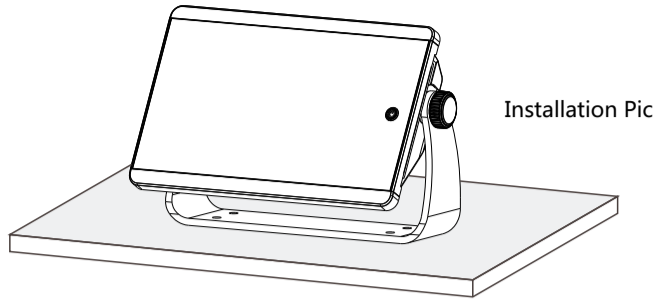
CONTENTS

- I、Installation01
- II、Operation06
- III、Spec and Parameter07
- IV、NMEA2000 Parameter Group Number(PGN)08
- V、SAE-J1939 Parameter Group Number(PGN)08

KMB-70 is an Integrated Data Monitor with an advanced TFT (Thin Film Transistor) screen. The unit is compatible with J1939 and NMEA2000 protocols. The KMB displays real time network information including engine output, fluid levels, and speed.

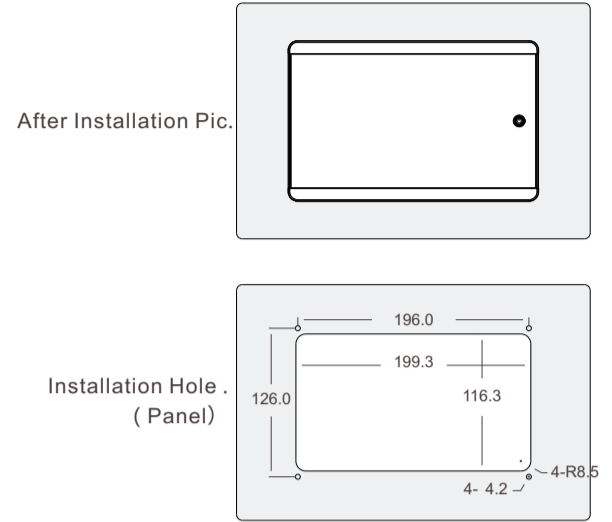
I、Installation

Method One , KMB be fixed on the desk and angle can be adjusted:

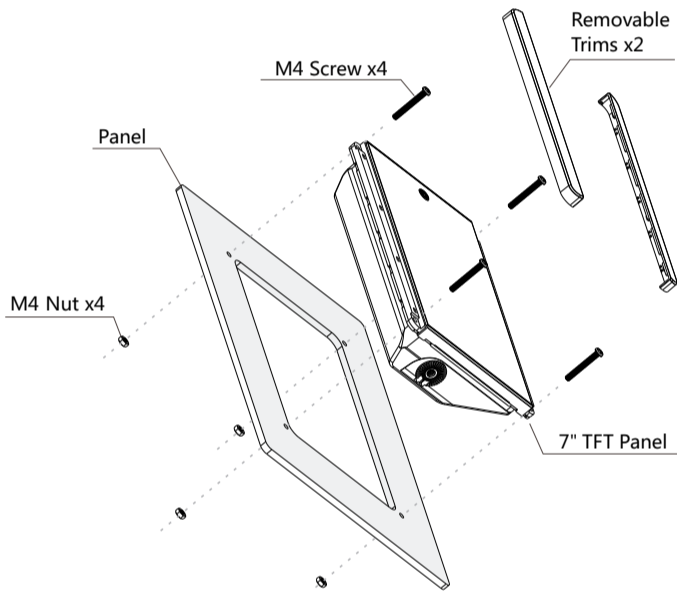


Method Two, Install KMB gauge from the upper side of panel as below:

- 1、Open one hole with 199.3mm length and 116.3mm width and holes according to below screw position. Make sure the holes dimension be the same as pictures.
- 2、Install the KMB gauge from upside to bottom on the panel and adjust the position and lock the screws;
- 3、After installation and two trims can be removed.
- 4、Connect the NEMA2000 wires on the back of KMB gauge and the other end should connect with NMEA2000 network.

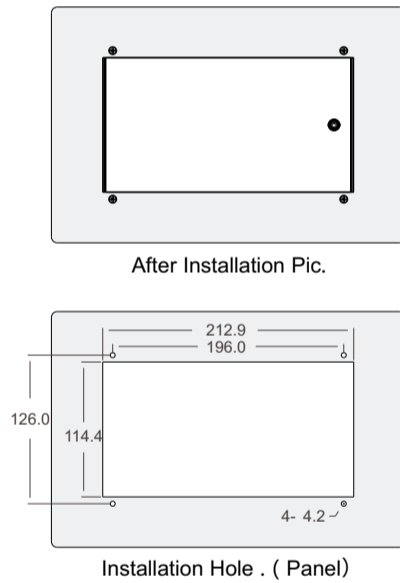


Installation Breakdown Drawing

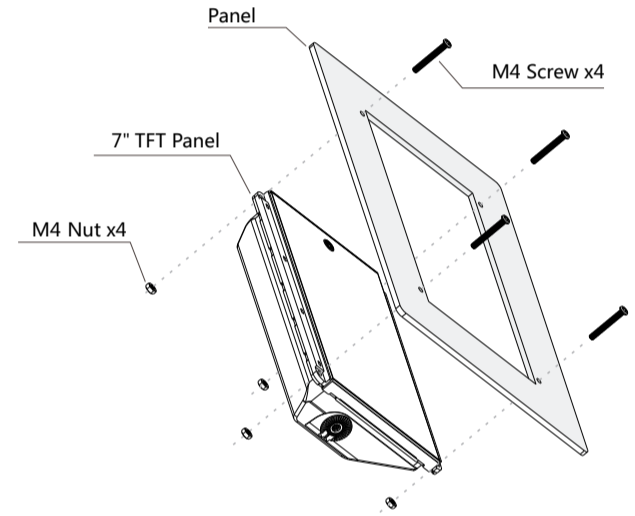


Method Three, Install KMB gauge from the bottom side of panel as below

- 1、Open one hole with 212.9mm length and 114.4mm width and holes according to below screw position. Make sure the holes dimension be the same as pictures.
- 2、Install the KMB gauge from bottom to upside on the panel and adjust the position and lock the screws;
- 3、Connect the NEMA2000 wires on the back of KMB gauge and the other end should connect with NMEA2000 network.



Installation Breakdown Drawing



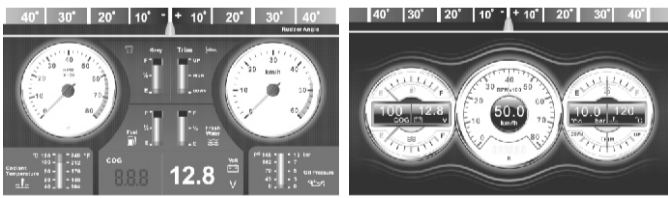
Display Screen Pin Corn Pic

No.	Color	Signal	No.	Color	Signal
1	Black	RPM1	7	Blue	Rudder
2	Brown	RPM2	8	Red	Fuel1
3	Green	Oil Press.1	9	Grey/Pink	Water1
4	Yellow	Oil Press.2	10	Blue/Red	Holding Tank1
5	Grey	TRIM1	11	White	Water Temp.1
6	Pink	TRIM2	12	Purple	Water Temp.2

Labels for connector: Circuit 2 NET-S (red V+), Circuit 5 NET-L (blue CAN_L), Circuit 3 NET-C (black V-), Circuit 1 shield, Male Micro-C connector, Circuit 4 NET-H (white CAN_H)

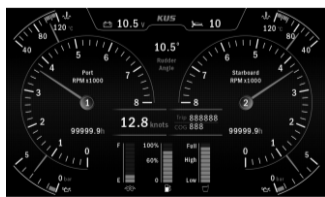
II、Operation

• Display Mode



Style I

Style II



Style III

• Touch Screen Setting



There is a physical button on the right side of the touch screen, long press to enter the touch setting interface. Button again before operation.

Lock touch screen: automatically enter the home screen display, screen touch function is locked. Unlock touch screen: the screen touch function can be reused. Shutdown: click the shutdown button, the screen will be off and locked, and long press the physical button again before operation.

• Setting Mode

Language	Chinese/English		
Style Setting	Style_1/Style_2/Style_3 Black/White/Night Brightness: 10~100%		
Data Setting	Signal Select	NMEA2000 J1939 Analog	
	Signal Setting	English Instance/Fluid Instance	
		Coolant Temp.	301-230/446-420
		Oil Pressure	10-1850/240-330
		Trim	0-1900/160-100
		Fuel Level	
		Fresh Water	0-1900/240-330
	Unit Setting	Black Water	
		Rudder	0-1900/87-9000
		Ratio	0.1~24.0
Alarm Setting	Speed	(15/30/60) Km/h (15/30/60) Knots	
	Tachometer	4K/6K/8K	
	Temperature	°C/°F	
Oil Pressure	Bar/psi		
About	Version information		

III、Spec and Parameters

Item	KMB-70
Size	7.0 inches
Resolution	800*480/1024*600 pixels
Working Volt.	9-32V DC
Working Current	400mA(12V)
Working Temp.	-20°C ~ +60°C
Stock Temp.	-20°C ~ +70°C

IV、NMEA2000 Parameter Group Number(PGN)

PGN	DATA
127245	Rudder: Rudder Position
127488	Engine Parameters, Rapid Update: Engine Speed(RPM)/Engine trim
127489	Engine Parameters, Dynamic: Engine temp. Oil press./Total engine hours
127505	Fluid Level: Fuel level/Fresh water level/Black water level (Sewage)
127508	Battery Status: Battery Voltage
129026	COG & SOG, Rapid Update: Course Over Ground/Speed Over Ground

V、SAE-J1939 Parameter Group Number(PGN)

PGN	DATA
65279	Fuel level
61444	Engine Speed
65263	Engine Oil Pressure
65263	Engine Coolant Temperature
65253	Engine Total Hours of Operation